



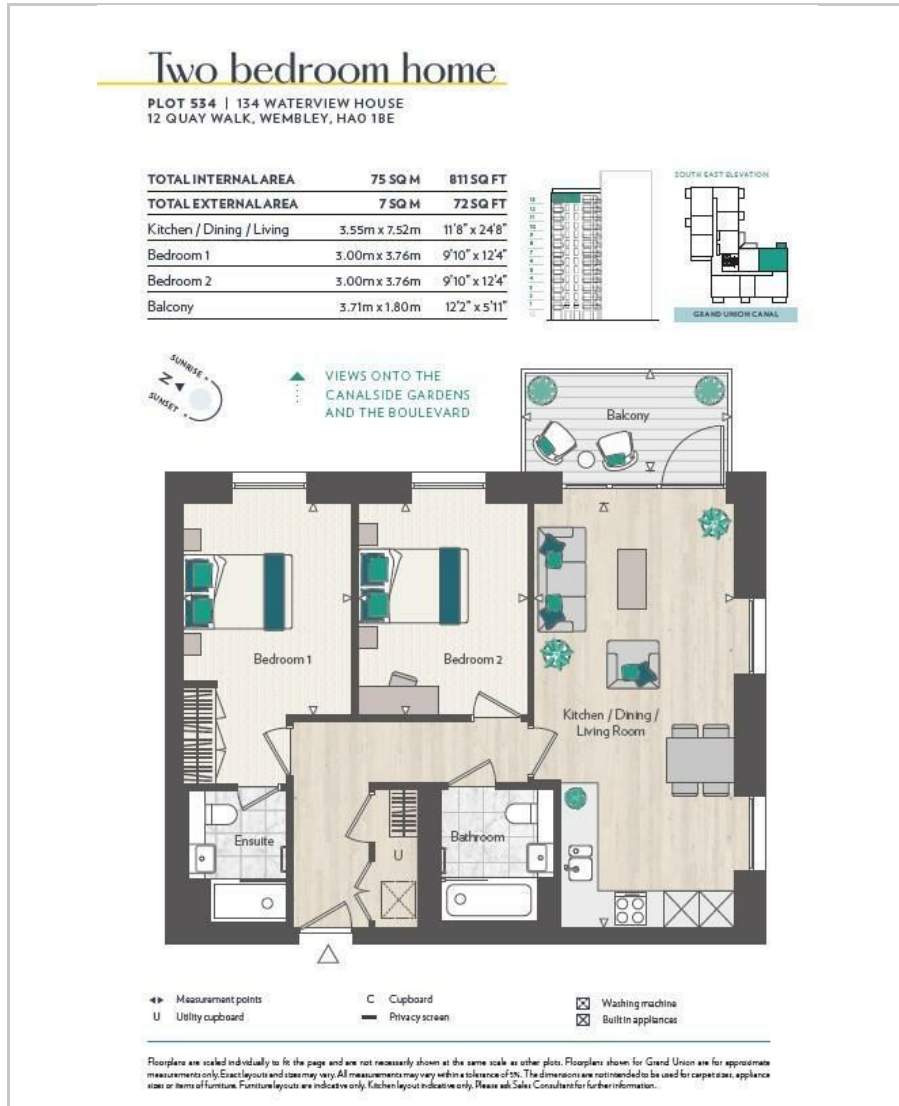
Grand Union, Waterview House, Beresford Avenue, Alperton, HA0 1NW

Asking Price £712,000

2 2 1

A set of three yellow icons representing property features: a bed icon for 2 bedrooms, a bathtub icon for 2 bathrooms, and a sofa icon for 1 living area. The numbers 2, 2, and 1 are placed to the right of each icon respectively.

Floor Plan



Waterview House at Grand Union will be a 15-storey residence in an exclusive waterside location. With a range of amenities right by your doorstep in this unique resort-lifestyle development. The luxurious homes are perfect for entertaining friends and family alike. Waterview House hosts a private residents' rooftop terrace offering great skyline views over London. A home here is the perfect place for escapism or exercise. Whichever suits your mood.



Perched on the 13th floor, this exquisite home offers 811sqft of internal bliss and an additional 72sqft of external space to soak in the scenery. Positioned in the ever-desirable northeast direction, it treats you to breathtaking views of the canalside gardens and the picturesque landscaped boulevard.



With a spacious two-bedroom layout, it is perfect for those seeking urban sophistication and comfort.

Decked in a stylish Grey palette, this residence exudes contemporary elegance. Anticipate the joy of calling this place home by October 2024.



These particulars, whilst believed to be accurate are set out as a general outline only for guidance and do not constitute any part of an offer or contract. Intending purchasers should not rely on them as statements of representation of fact, but must satisfy themselves by inspection or otherwise as to their accuracy. No person in this firm's employment has the authority to make or give any representation or warranty in respect of the property.

Sudbury

35 Court Parade, Sudbury
 Middlesex HA0 3HS

Sales 020 8904 4888
 Lettings 020 8452 7999
 E sudbury@danielsestateagents.co.uk

Wembley

438 High Road, Wembley
 Middlesex HA9 6AH

Sales 020 8900 2811
 Lettings 020 8452 7999
 E wembley@danielsestateagents.co.uk

Neasden

352 Neasden Lane, Neasden
 London NW10 0AD

Sales 020 8452 7000
 Lettings 020 8452 7999
 E neasden@danielsestateagents.co.uk

Willesden Green

33 Walm Lane, Willesden Green
 London NW2 5SH

Sales 020 8452 7000
 Lettings 020 8452 7999
 E willesdengreen@danielsestateagents.co.uk

Kensal Rise

77 Chamberlayne Road, Kensal Rise
 London NW10 3ND

Sales 020 8969 5999
 Lettings 020 8969 5999
 E kensalrise@danielsestateagents.co.uk