



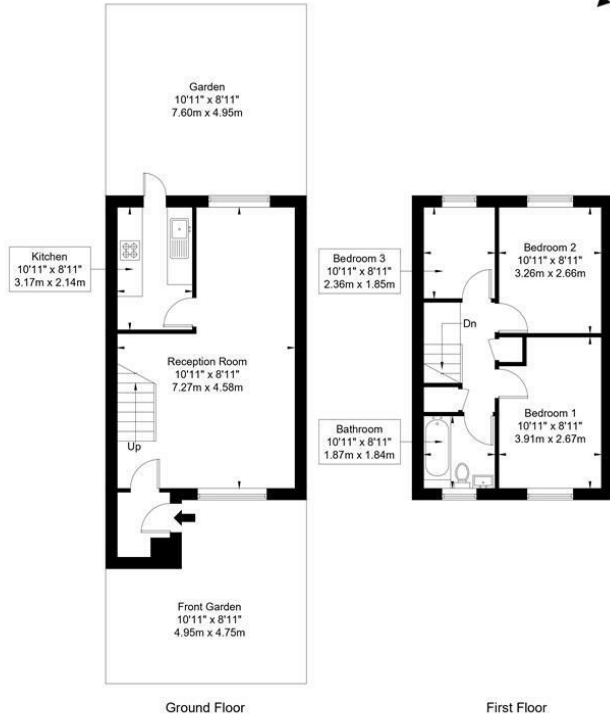
Daintry Close, Harrow, HA3 8PT
Asking Price £500,000

3 1 2 D

Floor Plan

Daintry Close, Harrow, HA3 8PT

Approx Gross Internal Area = 69.46 sq m / 748 sq ft
 Front Garden = 23.51 sq m / 253 sq ft
 Garden = 37.62 sq m / 405
 Total = 130.59 sq m / 1 406



Ref :

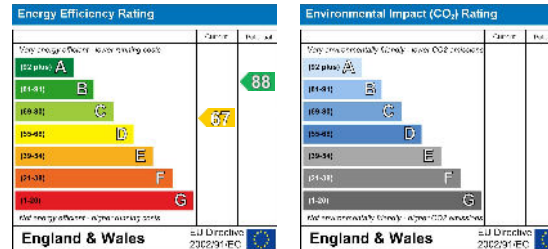
Copyright **BLEU PLAN**

The Floor plan is not to scale and measurements and areas shown are approximate and therefore should be used for illustrative purposes only. The plan has been prepared in accordance with the RICS code of Measuring Practice and whilst we have confidence in the information produced it must not be relied on. If there is any aspect of particular importance, you should carry out or commission your own inspection of the property.
 Copyright @ BLEUPLAN

- Three Bedrooms
- Cul-De-Sac Location
- Close To Amenities
- No Upper Chain
- Private Garden
- Backing Parkland



Energy Efficiency Graph



These particulars, whilst believed to be accurate are set out as a general outline only for guidance and do not constitute any part of an offer or contract. Intending purchasers should not rely on them as statements of representation of fact, but must satisfy themselves by inspection or otherwise as to their accuracy. No person in this firm's employment has the authority to make or give any representation or warranty in respect of the property.

Sudbury

35 Court Parade, Sudbury
 Middlesex HA0 3HS

Sales 020 8904 4888
 Lettings 020 8452 7999
 E sudbury@danielsestateagents.co.uk

Wembley

438 High Road, Wembley
 Middlesex HA9 6AH

Sales 020 8900 2811
 Lettings 020 8452 7999
 E wembley@danielsestateagents.co.uk

Neasden

352 Neasden Lane, Neasden
 London NW10 0AD

Sales 020 8452 7000
 Lettings 020 8452 7999
 E neasden@danielsestateagents.co.uk

Willesden Green

33 Walm Lane, Willesden Green
 London NW2 5SH

Sales 020 8452 7000
 Lettings 020 8452 7999
 E willesdengreen@danielsestateagents.co.uk

Kensal Rise

77 Chamberlayne Road, Kensal Rise
 London NW10 3ND

Sales 020 8969 5999
 Lettings 020 8969 5999
 E kensalrise@danielsestateagents.co.uk