





**Metropolitan Court, Willesden Green, LONDON NW10 2QD**  
**£2,400 pcm**



## PROPERTY DESCRIPTION

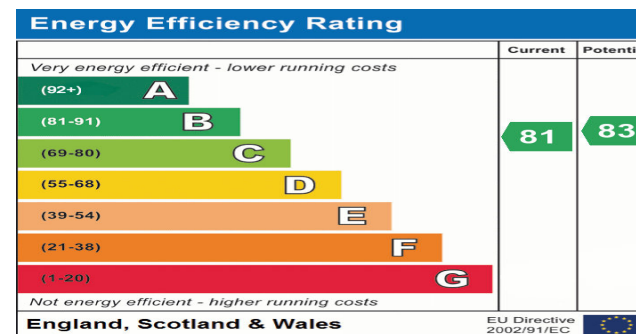
A MODERN GROUND & LOWER GROUND APARTMENT located within close proximity to shops, restaurants and Zone 2 Willesden Green Jubilee line station.

The property offers over 1100sqft of living accommodation and boasts TWO DOUBLE BEDROOMS, SPACIOUS LIVING ROOM & DINING AREA and OPEN PLAN KITCHEN with BREAKFAST BAR, FAMILY BATHROOM and PRIVATE REAR GARDEN.

The property is FULLY FURNISHED including BEDS, WARDROBES and LIVING ROOM FURNITURE.

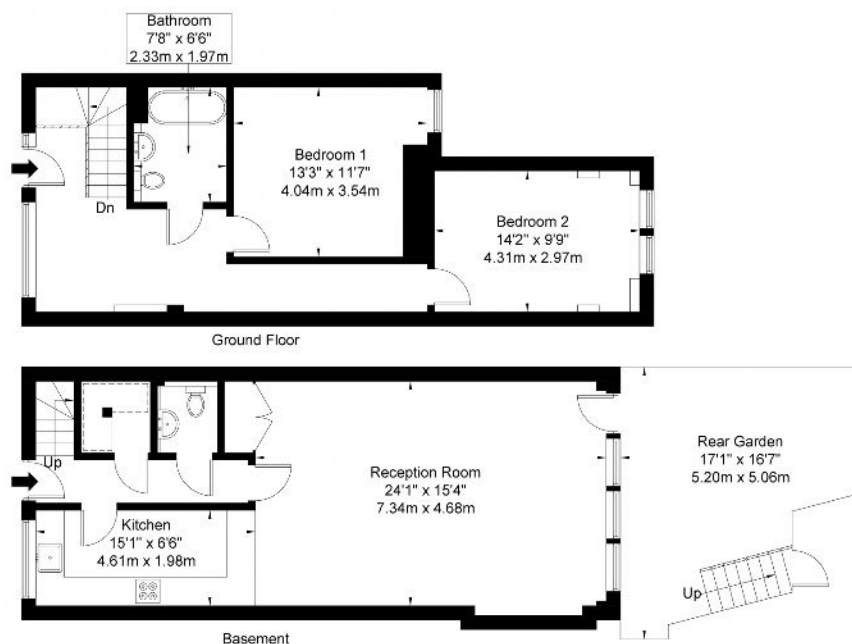
## POINTS OF INTEREST

- AVAILABLE 02/03/2024
- TWO BEDROOMS
- SPLIT LEVEL
- PRIVATE GARDEN AREA
- CLOSE TO AMENITIES
- CLOSE TO WILLESDEN GREEN STATION ZONE 2



# Metropolitan Court, High Road Willesden, NW10 2QD

Approx. Gross Internal Area = 108.3 sq m / 1166 sq ft



Ref

Copyright **BLEU  
PLAN**

The Floor plan is not to scale and measurements and areas shown are approximate and therefore should be used for illustrative purposes only. The plan has been prepared in accordance with the RICS code of Measuring Practice and whilst we have confidence in the information produced it must not be relied on. If there is any aspect of particular importance, you should carry out or commission your own inspection of the property.

Copyright © BLEUPLAN