



**daniels**  
danielstateagents.co.uk



**Clifford Gardens, Kensal Rise, London NW10 5JB  
£700,000 - Freehold**



## PROPERTY DESCRIPTION

NO UPPER CHAIN, UNIQUE FAMILY HOME OVER THREE FLOORS...

Located in the highly sought-after Kensal Rise area, this charming link detached cottage offers an exceptional opportunity to acquire a well-presented family home over three floors. With a superb location close to local amenities and excellent transport links, this delightful property combines the appeal of a peaceful private garden with the convenience of urban living. Boasting no upper chain, this home is ready for you to move in and make it your own.

Kensal Rise is renowned for its vibrant community atmosphere, eclectic mix of shops, cafes, and eateries, as well as its green spaces. Residents enjoy easy access to renowned local schools, independent boutiques, and bustling weekly markets. The proximity to Kensal Rise Station ensures swift and straightforward travel into central London and beyond, perfect for commuters and those seeking a blend of city living with suburban charm.

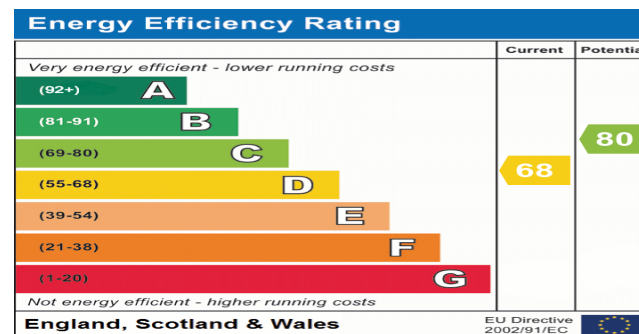
The property boasts private gated entrance and upon entering this delightful link detached cottage, you will immediately appreciate the thoughtful layout across three floors that maximizes space and light. The ground level welcomes you with a warm and inviting living area which provides a versatile space for both relaxation and entertaining, the first floor level offers two bedrooms and family bathroom. The well-appointed kitchen area is located on the lower ground and designed for functional daily living and features ample storage and work surfaces, perfect for family meal preparation and direct access to private garden.

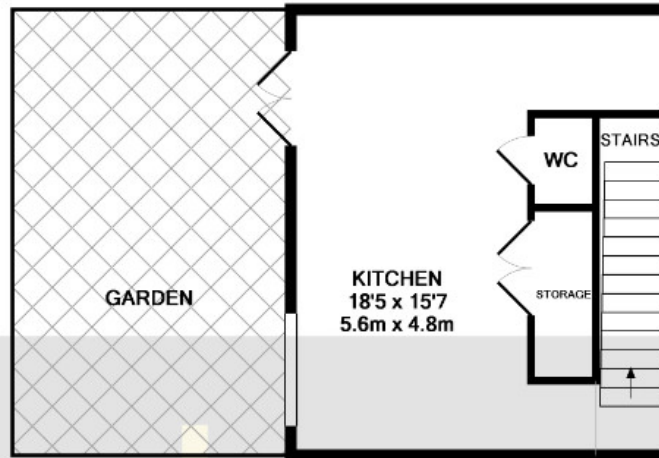
One of the standout features of this property is its beautiful private garden, an ideal spot for outdoor entertaining, or simply enjoying some quiet time in a serene setting.

Overall, this link detached cottage in Kensal Rise exemplifies comfortable modern living in a great location. Whether you are a growing family or looking for a charming home with space to expand, this property ticks all the boxes. With no upper chain, you can move quickly and start enjoying the benefits of this wonderful home and vibrant neighbourhood.

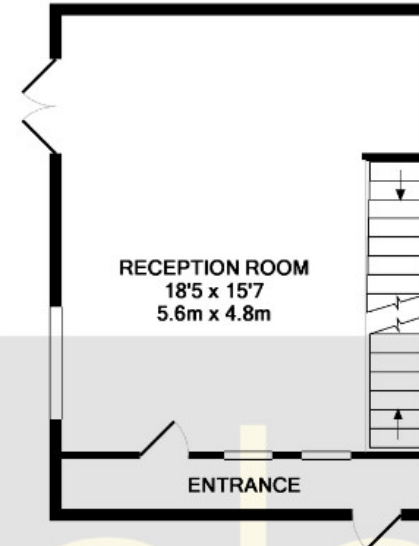
## POINTS OF INTEREST

- LINK DETACHED COTTAGE
- GREAT LOCATION
- CLOSE TO KENSAL RISE STATION
- CLOSE TO AMENITIES
- OVER THREE FLOORS
- WELL PRESENTED FAMILY HOME
- NO UPPER CHAIN
- PRIVATE GARDEN

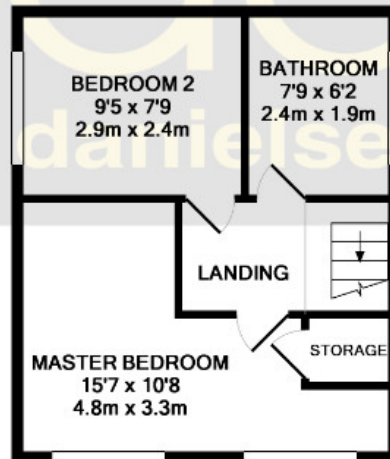




**BASEMENT LEVEL**  
APPROX. FLOOR  
AREA 287 SQ.FT.  
(26.7 SQ.M.)



**GROUND FLOOR**  
APPROX. FLOOR  
AREA 326 SQ.FT.  
(30.3 SQ.M.)



**1ST FLOOR**  
APPROX. FLOOR  
AREA 287 SQ.FT.  
(26.7 SQ.M.)

**MEWS COTTAGE, CLIFFORD GARDENS, LONDON, NW10**  
**TOTAL APPROX. FLOOR AREA 900 SQ.FT. (83.6 SQ.M.)**

Whilst every attempt has been made to ensure the accuracy of the floor plan contained here, measurements of doors, windows, rooms and any other items are approximate and no responsibility is taken for any error, omission, or mis-statement. This plan is for illustrative purposes only and should be used as such by any prospective purchaser. The services, systems and appliances shown have not been tested and no guarantee as to their operability or efficiency can be given  
Made with Metropix ©2013