



Littleton Crescent, Harrow, HA1 3SX

Asking Price £1,750,000

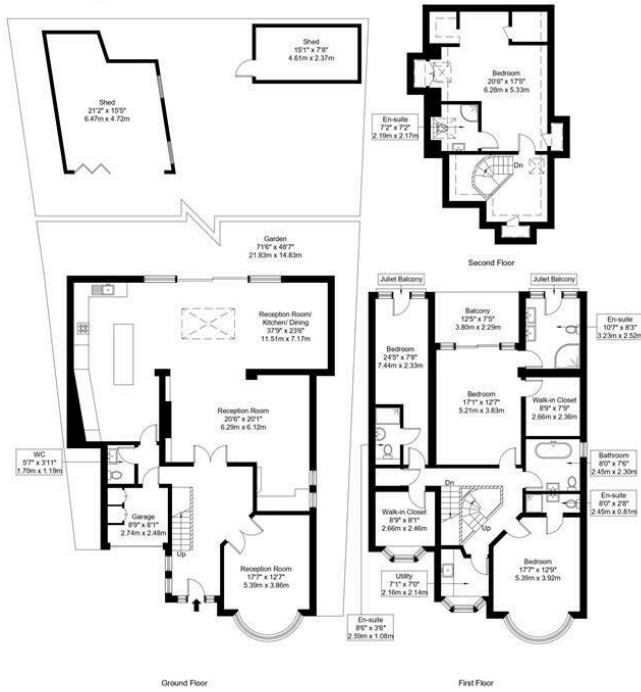
5 5 3 D

Floor Plan

Littleton Crescent, HA1 3SX

Approx Gross Internal Area = 287.78 sq m / 3097 sq ft
 Balcony = 8.77 sq m / 94 sq ft
 Shed = 36.92 sq m / 397 sq ft
 Eaves Storage/ RHH = 10.78 sq m / 116 sq ft
 Total = 344.25 sq m / 3705 sq ft

= Reduced headroom below 1.5m / 5'0"



Ref :

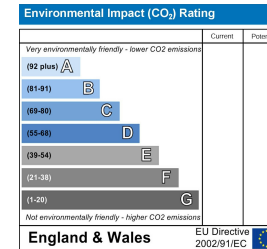
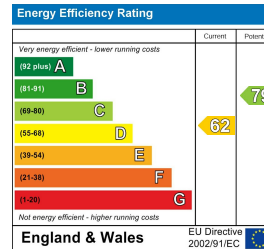
Copyright **BLEU PLAN**

The Floor plan is not to scale and measurements and areas shown are approximate and therefore should be used for illustrative purposes only. The plan has been prepared in accordance with the RICS code of Measuring Practice and whilst we have confidence in the information produced it must not be relied on. Maximum lengths and widths are represented on the floor plan. If there is any aspect of particular importance, you should carry out or commission your own inspection of the property.
 Copyright © BleuPlan

- SUBSTANTIAL FIVE BEDROOM DETACHED HOUSE
- STUNNINGLY FINISHED FROM TOP TO BOTTOM
- SET ACROSS THREE FLOORS
- EXTENDED DOBLE STOREY TO THE REAR AND LOFT
- THREE RECEPTION ROOMS
- BI-FOLD DOORS TO GARDEN FROM THE REAR OF THE PROPERTY
- FOUR BEDROOMS BOASTING ENSUITE FACILITIES
- BALCONY OVERLOOKING LANDSCAPED REAR GARDEN
- BEAUTIFULLY ARRANGED KITCHEN DINER
- GARAGE VIA DRIVEWAY AND OFF STREET PARKING



Energy Efficiency Graph



These representations, whilst believed to be accurate are set out as a general outline only for guidance and do not constitute any part of an offer or contract. Intending purchasers should not rely on them as statements of representation of fact, but must satisfy themselves by inspection or otherwise as to their accuracy. No person in this firm's employment has the authority to make or give any representation or warranty in respect of the property.

Sudbury

35 Court Parade, Sudbury
 Middlesex HA0 3HS

Sales 020 8904 4888
 Lettings 020 8452 7999
 E sudbury@danielsestateagents.co.uk

Wembley

438 High Road, Wembley
 Middlesex HA9 6AH

Sales 020 8900 2811
 Lettings 020 8452 7999
 E wembley@danielsestateagents.co.uk

Neasden

352 Neasden Lane, Neasden
 London NW10 0AD

Sales 020 8452 7000
 Lettings 020 8452 7999
 E neasden@danielsestateagents.co.uk

Willesden Green

33 Walm Lane, Willesden Green
 London NW2 5SH

Sales 020 8452 7000
 Lettings 020 8452 7999
 E willesdengreen@danielsestateagents.co.uk

Kensal Rise

77 Chamberlayne Road, Kensal Rise
 London NW10 3ND

Sales 020 8969 5999
 Lettings 020 8969 5999
 E kensalrise@danielsestateagents.co.uk